



**SOURCE  
ATLANTIC**

# METALWORKING

**DVF 5000 W/AWC**

**DOOSAN**

The DVF 5000 is designed for machining complex work pieces with high precision and speed. Superior performance from the 18,000-rpm spindle paired with the travelling column machine structure provides a high productivity machine for even the most demanding processes.



Automatic Workpiece Changer is a cost effective solution providing multiple pallets for longer periods of unmanned operation or reduced set-up times when producing many different work pieces in low lot sizes.

- 5 simultaneously controlled axes (X, Y, Z, B, C) with high precision, absolute rotary encoders on B and C axes and absolute glass scales on XYZ axes
- Fast rapid traverse rate (X – 40m/min \ 1575ipm, Y – 40m/min \ 1575ipm, Z – 40m/min \ 1575ipm)
- Renishaw probe-ready
- Doosan Tool Load Monitoring and Adaptive Feedrate Control
- Spindle orientation, load meter, override and rigid tapping
- High precision, built in spindle design with (18.5/22kW \ 24.8/29.5 hp motor, 18,000rpm)

DOOSAN MACHINE TOOLS AMERICA  
**CNC MACHINE TOOLS**

[www.sourceatlantic.ca/metalworking](http://www.sourceatlantic.ca/metalworking)

## PUMA TT2100SY

# DOOSAN

These multi-task turning centers are designed for long-term accuracy and superior surface finishes. Minimize non-cutting time with high speed turret indexing and fast rapid traverse rates! Same-size spindle motors on both spindles provide improved performance and flexibility. Great for just-in-time production requirements with incredible multi-tasking capabilities.



- 5,000rpm 25kW (35 hp) spindle motors
- Two servo controlled, bi-directional 12 station turrets with 24 position indexing with rigid base mounted tooling (BMT) system
- Rigid one piece massive casting – 45 degree torque tube slant bed design
- Right spindle can be synchronized with left spindle
- 5,000 rpm 10 hp rotating tool spindle motor; live tools can be mounted on all stations
- Y-axis upper and lower turret with 3.93" (+/- 1.96") total travel
- Automatic tool setter
- Automated meter lubrication system

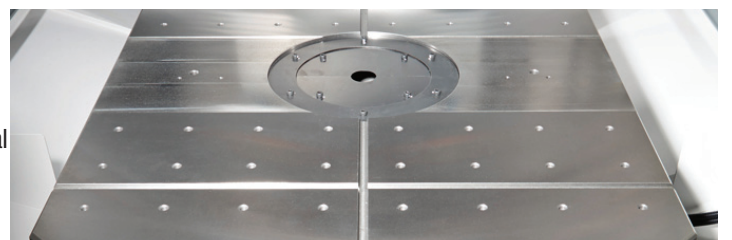
## R650X1

This machine demonstrates high productivity, and provides the largest machining area among QT table machines – enabling the mounting of large jogs that was not possible on conventional machines.

- 3.4s pallet change time
- 650 mm X-axis travel allows for large workpiece machining or multiple parts machining
- Increased table size and turning diameter for mounting of large jigs
  - Turning Diameter: 1,250mm
  - Jig Height: 350mm
  - Work Area Size (One Face): 800x400mm
- Easily perform workpiece change or tool change with operation from both the side and the front
- High acceleration spindle: Spindle Start/Stop Time: 0.15s
- Simultaneous operation function – QT table turns and the X/Y-additional axes are positioned simultaneously when tools are changed; Wasted time = zero!



brother  
at your side



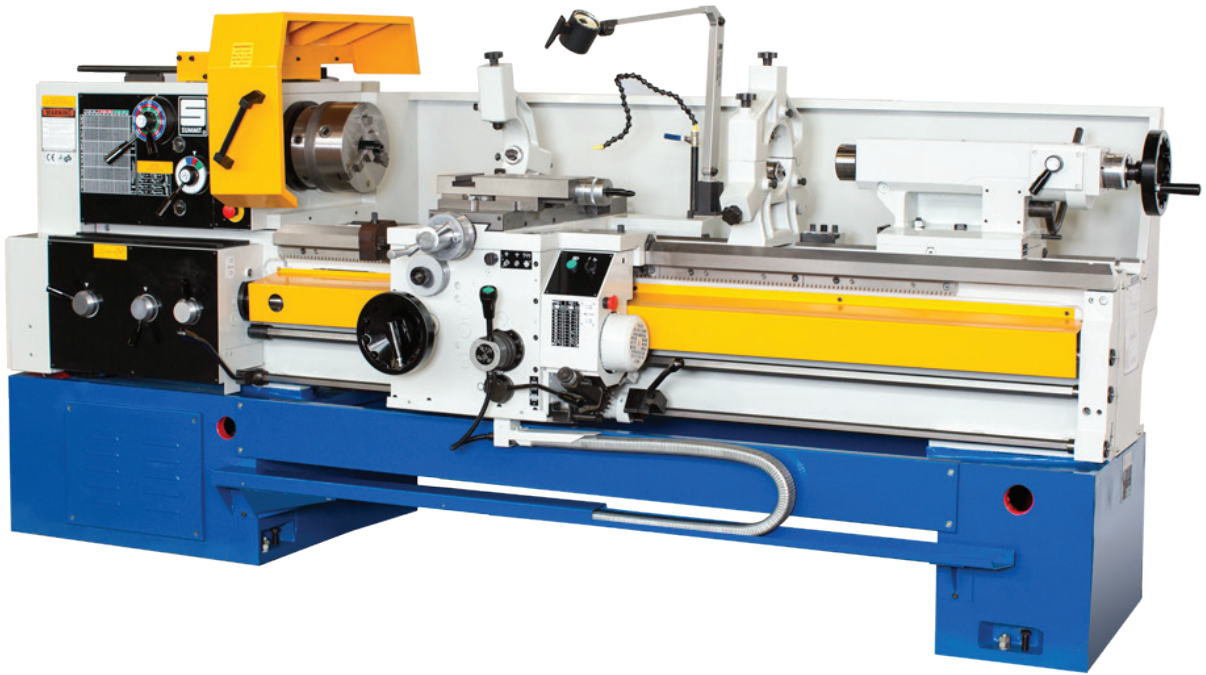
brother Compact Machining Center  
**SPEEDIO**



# SUMMIT MACHINE TOOL

## SUMMIT 16" LATHE

The heavyweight of mid-size lathes



- Clutched headstock for more precise control and long lasting reliability
- All cast iron construction provides solid foundation for vibration absorption and rigidity
- Rapid traverse on carriage (4 way joystick)
- 2-speed tailstock for faster setups
- Easy to operate with pinpoint accuracy for a fine finish
- Bulk and horsepower to take on the heaviest chip loads
- Quick-change gearbox for cutting inch, metric, module and diametrical pitch threads
- Greater radial and thrust capacity with the oversized spindle and 3" thru hole
- Hardened and ground alloy steel gears, shafts and splines for smooth performance and longevity
- European built and CE certified

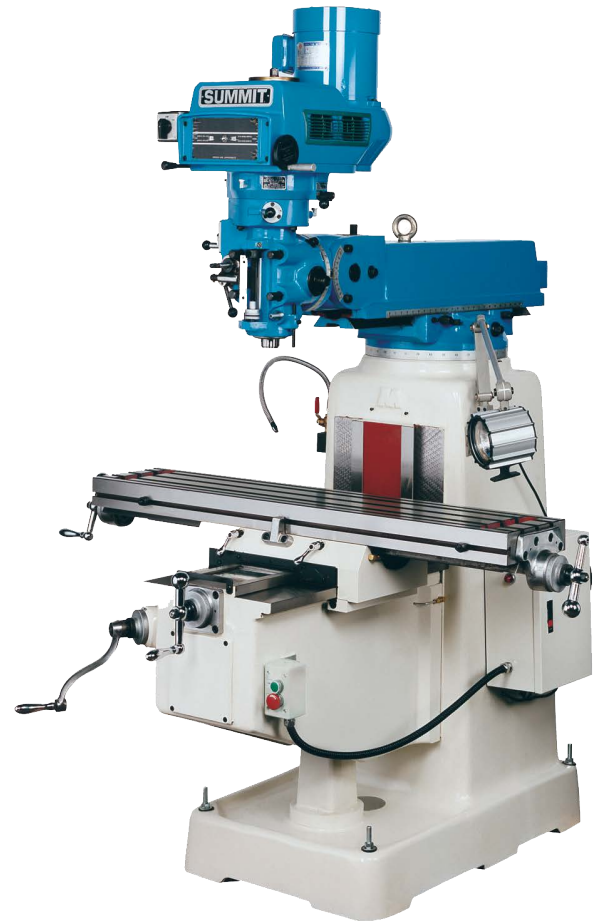
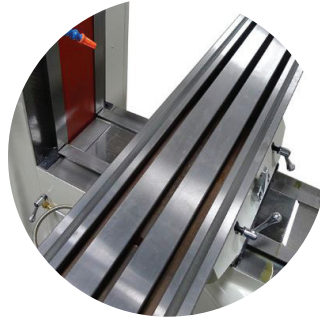




## VS-350B

V-Series vertical mills are engineered and manufactured from the finest components – all controls are centralized for ease of operation in either hand or power feed mode.

- Three horsepower model with standard variable speed
- Heavy Meehanite cast construction
- Double table locks
- Way wipers for saddle and column
- Tilting and rotating head
- Heavy box saddle
- Low voltage controls
- Variable speed head
- Turcite-B inserted guideways for extended machine life



## MB10

Economical, semi-synthetic fluid that is free of chlorine and formaldehyde-releasing agent

- Effective wetting properties maintains clean machines and components
- Stable fluid suitable for wide range of water conditions
- Inhibits micro bacterial growth to extend fluid life in central systems and individual sumps
- Low foaming
- Formaldehyde releasing agent free to comply with health and safety regulations
- Available in Pail, Drum, and Liquibin

Recommended Concentrations

- Grinding: 5 - 6%
- General Machining: 6 - 10%





## HD PLASMA TABLE

The next generation of high precision plasma cutting that works the way you do... intelligently.

- Available in 100-400 Amp outputs for cutting plate up to 2" (50mm) thick
- Excellent dross-free cuts using oxygen (O<sub>2</sub>) plasma on mild steel
- Unmatched cut quality on non-ferrous metals using unique Water Mist Secondary (WMS) process
- Highest kW output for maximized duty cycle and cut speed
- Reduced downtime during parts changes with the Speedlok cartridge design
- Minimal heat affected zone (HAZ) to improve welding quality
- 3DPro technology sets the new standard in robotic cutting thin gauge material

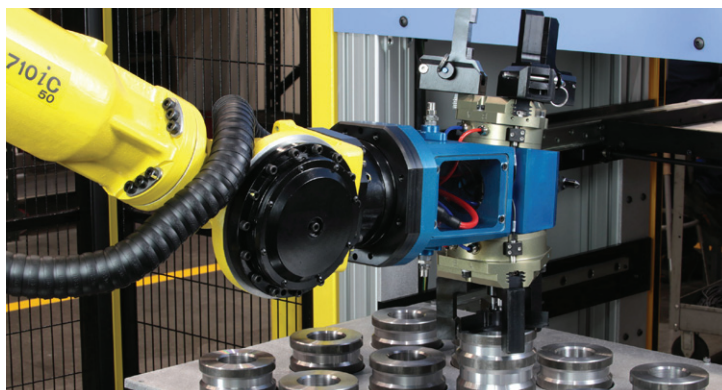
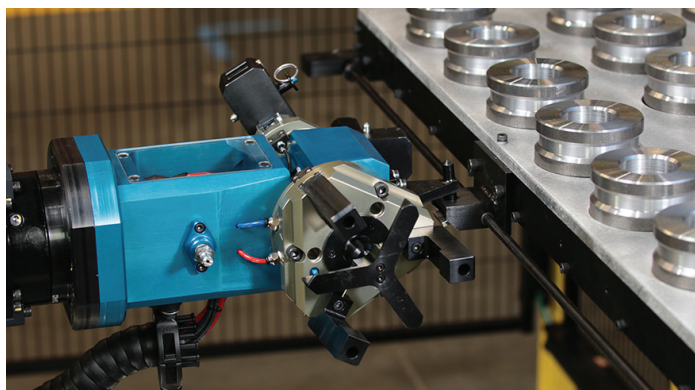


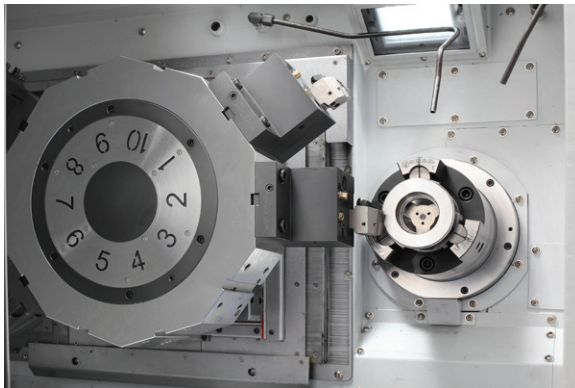
## DOOCCELL M20 4 DRAWER

# DOOSAN

The DooCell is a modular robot cell that automatically loads and unloads parts from three Doosan machines. Perfect for small-to-medium size shops who are ready for unmanned operation

- Can accommodate up to three Doosan machines – and has a special three-to-six part drawer for storing raw materials or finished parts
- Small footprint for rapid installation and limited floor space
- Each drawer holds up to 180 pounds of parts
- All drawers are accessible outside the cell to avoid stopping the machine cycle





Designed for high-speed, high accuracy use in a production environment. Two spindles within easy reach of one operator, fast turret indexing, and rapid traverse rates minimize non-cutting time.

- Simultaneously machine two parts or Side A – Side B production
- Heavy duty Meehanite cast iron bed to minimize vibration
- Large, wrap-around box way construction
- 10-station heavy duty servo controlled turret - .16 second turret swivel
- Powerful 25 hp high speed-high torque spindle motor
- Large 14.17" max. turning diameter and 6.69" max. turning length
- Full contouring C-Axis
- 10 hp rotating tool spindle motor
- 5,000 rpm rotary tool speed
- Compact design for minimal floor space

**DOOSAN MACHINE TOOLS AMERICA**  
**CNC MACHINE TOOLS**

[www.sourceatlantic.ca/metalworking](http://www.sourceatlantic.ca/metalworking)

# M-20iD ROBOT

Slim and strong material handling robot for multi-purpose medium payloads – incorporate the benefits of a hollow upper arm without compromising performance.

# FANUC

- Dressout issues like snagging, tearing, and rubbing are a thing of the past with all utilities contained neatly within the arm
- Ideal for multi-material handling
- Suited for narrow cells with slim arm, wrist, and compact footprint
- Internal cable routing to avoid cable interference
- Fast pick-and-place cycle to increase throughput on payloads of up to 35 kg
- 6 axes, 1831 mm reach



**SA** | SOURCE ATLANTIC

**Shop Online!  
Now Available**



**Shop Online**



**Connect with a Technical Specialist**



**Find a Branch**

## Branch Locations

### Calgary

44-8009 57 Street SE  
403.203.0289

### Edmonton

5431 99th Street NW  
780.435.3737

### Regina

841 Roulston Street  
306.721.6442

### Saskatoon

3703 Millar Ave #11  
306.653.7788

### Winnipeg

169 Omands Creek Blvd  
204.632.4092

**SA** | SOURCE ATLANTIC

**ENHANCE PRODUCTIVITY WITH HIGH PRECISION SOLUTIONS FROM SOURCE ATLANTIC**

**Meet the Team | Connect with a Specialist! [cncmachines@sourceatlantic.ca](mailto:cncmachines@sourceatlantic.ca)**

**Alberta**



**Scott Jensen**  
*Cutting Tools Manager*



**Steve Greenslade**  
*Machining Specialist Northern Alberta*



**Doug Criss**  
*Cutting Tools Technical Specialist, Northern Alberta*

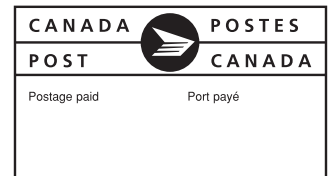
**Manitoba & Saskatchewan**



**Ron Myall**  
*Machining Manager*



**Mark Perry**  
*Machining Specialist Manitoba and Saskatchewan*



METALWORKINGEQUIPMENT&TOOLING  
CARBIDECUTTINGTOOLSFLUIDS&LUBRICANTS  
FASTENERSABRASIVESSAFETYAPPAREL&SUPPLIES  
MATERIALHANDLINGINVENTORYSOLUTIONS

