

## Supply Chain Management Solutions

Allowing you to focus on what your business does best.

## Source Atlantic Supply Chain Management Solution

Common Supply Chain Needs	eCommerce Page 3	Asset Management Page 4	Vendor Managed Inventory Page 5	Vending Machines Page 7	Mobile Store Page 9	Mobile App Page 11	Point-of-Use Station Page 13	Procurement Card Page 14	Reporting and Analytics Page 15	Warehouse Mapping Page 17
Secure environment, 24/7 access to stock for employees				●	●					
Storeroom needs to better manage inventory flows, set min/max levels, improve fill rates		●	●			●	●		●	●
No storeroom staff or physical storeroom; Need to improve fill rates and on-time delivery	●		●	●						
Company is doing project work or going to a jobsite where employees and contractors need quick access to product	●		●		●			●	●	
Maintaining a storeroom but require more space			●		●					●

**Understanding today's increasingly complex supply chain can be tough. We can help so you can focus on what your business does best!**

In 2000, Source Atlantic introduced our Supply Chain Solutions offered in partnership with CribMaster.

Since then, we've become experts at designing inventory management solutions that reduce costs and improve performance. Source Atlantic has a full range of services that are customizable to each unique customer: whether it be assessing business processes, alleviating the burden of inventory management, gaining control over project spend, or otherwise – we work closely with you to help you achieve your goals.

 **CANADA BEST  
MANAGED  
COMPANIES**



# eCommerce

We have taken product availability and made it that much easier with our eCommerce platform! Source Atlantic has several features to facilitate ease of ordering and help you track and control spend:

## ✓ Contract list item availability and custom catalogues

View and purchase your contracted items on your customized user profile which is completely integrated with pricing and restrictions: limit to only approved items, add your company logo, have special approval workflows, or integrate with your procurement system.

## ✓ Punch-Out Direct ERP integration

Buyers can access our website through their own procurement application. Punchout launches the Source Atlantic eCatalogue within the buyers frame, the buyer can browse the catalogue and add items to the shopping cart; once they are finished, the selected items in the shopping cart get brought back to the buyers purchase order system as an order.

## ✓ Online access to order and invoice history

The platform allows for hands-off computer transactions for both parties with computer-to-computer exchange of business data such as purchase orders, invoices, and order acknowledgments.

**Buy Now!** [www.sourceatlantic.ca/products](http://www.sourceatlantic.ca/products)





# Asset Management

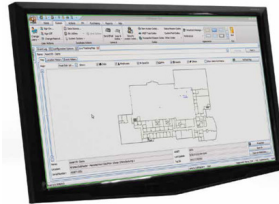
Remain compliant, organized, and stocked



We can help you maintain the integrity of your assets to eliminate downtime and help ensure that your physical resources are working to their full capacity through RFID and mobile computing.

## Source Atlantic can:

- Manage scalable technology:
  - Barcoding, RFID, Real-time visibility
- Manage calibrations and preventive maintenance
- Maintain safety compliance
- Setup security options for issuing tools
- Serialize items for better tracking
- Manage Last Point Read
  - Records "last seen" location and time stamp
  - Track tools/assets across your facility
  - Reduce search times
  - Increase accountability
- Provide RFID scanner technology
  - Locate lost tools/assets
  - Assign assets
  - Cycle counting
- FOD and prevention



# Vendor Managed Inventory

## Alleviate the Burden of Inventory Management

Source Atlantic takes on the purchase order entry, receiving, and putaway functions on your behalf – removing the burden of inventory management from you and your team. Other benefits include:

- ✓ **Cost savings:** economical order sizes based on usage and reduced interest on inventory
- ✓ **Smaller footprint:** regular visits enables a smaller footprint to manage inventory
- ✓ **Reduced transportation costs:** consolidated shipments with Source Atlantic reduces suppliers, excess freight, and multiple deliveries
- ✓ **Better project planning:** item usage reports with information necessary for project budgeting (cost per man-hour, work order, job, etc.)
- ✓ **Reduce stock-outs:** reliable delivery for time and production gains
- ✓ **Clean item data:** because we work with you to identify items and assign custom stocking levels, we both benefit from building a clean item database



# Vendor Managed Inventory

## Customer Experience, UNBSJ



**Situation:** Campus has multiple storerooms in multiple locations – must be managed and maintained around the clock and 365 days a year.

### Objective:

- Consolidate items and suppliers
- Improve storage capacity of main storeroom to allow consolidation of 3 satellite stores
- Improve inventory and shelving to allow quick and accurate item picking

### Solution:

- Main storeroom improvement plan – high-density shelving increased storage capacity by 13%
- Consolidation of safety, electrical, plumbing items
- Barcoding of entire facility (item id, description, min/max stocking requirement)
- VMI program for all facilities: a Source Atlantic technician visits on a weekly basis to monitor stock levels and replenish as needed ensuring a high fill rate
- Burden of inventory management and PO entry placed on the Source Atlantic technician



# Vending Machines

Reduce Stock-Outs, Lower Costs, and Control Inventory Consumption



## ProStock

- High-security dispensing: manage distribution of hundreds of items at the point of use
- Suggested inventory types:
  - Gloves
  - Inserts, taps, and dies
  - Batteries
  - Safety glasses
  - Aerosols
  - Power tools
  - Hand tools



## ProLock

- Access-controlled, flexible locker
- Suggested inventory types:
  - Power tools
  - Hand tools
  - Gauges



## WeighStation

- Precise weight-sensing technology/robust software that effectively streamlines purchasing, replenishment, dispensing processes
- Suggested inventory types:
  - Gloves
  - Fasteners
  - Abrasives
  - Drill bits
  - Welding rods



# Vending Machines



## Express ToolBox

- High security vending: controlled dispensing of indirect material
- Critical inventory levels and replenishment done by Source Atlantic
- Suggested inventory types:

Gloves	Tape
Batteries	Fasteners
Filters	Safety Glasses



## ExpressVend

- Access-controlled locker solution
- Vend large and bulky consumables
- Suggested inventory types:

Power tools
Hand tools
Harnesses
Lanyards



## X3

- Secure, a la carte dispensing: helix and carousels can vertically stack for satellite vending of tool crib inventory
- Suggested inventory types:

Single/multi-pack inserts	Filters
PPE/cutting tools	Tape
Batteries	Fasteners
Safety glasses	Welding tips

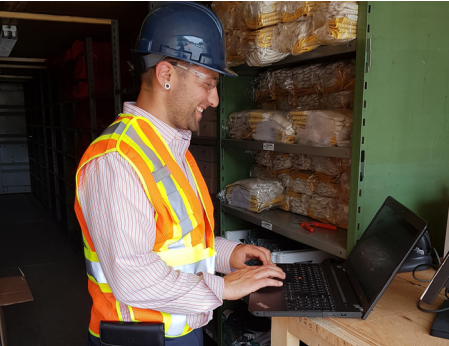


# Mobile Store

## Product You Need, When You Need It

Prevent stock-outs and eliminate daily project procurement tasks! The mobile store brings a fully stocked, customizable container to your location – providing you the products you need, when you need them.

- Customizable to your needs with options including: shelving, product bins, labels, lighting, heat, insulation, service counter, inventory management software, and more!
- Inventory is managed by monitoring stock levels and replenishing based on usage
- Employees scan to access for security and tracking
- Customer-approved product list with min/max quantities
- Customizable inventory usage reports
- Min/max review throughout project



# Mobile Store

## Customer Experience, LOMA/Lorneville



*"With Source looking after our contract demands for more product, management can concentrate on real issues."*

— Reg Doyle, Piping Superintendent (LOMA Construction Inc.)

*"It's like bringing a hardware store with you wherever you go, with stock that never runs out!"*

— Danny Marr, Procurement at Lorneville



**Situation:** Value-added construction and fabrication services contractor, LOMA, had a project in a remote location to construct a new nickel processing plant located 95 kilometers west of St. John's

### Objective:

- Secure supply chain solution to order inventory
- A system to manage, store, and track rebuys to ensure supplies are always on hand

### Solution:

- Source Atlantic built a customized container for LOMA
- Full coordination to identify necessary items
- Fully-stocked and scalable mobile store delivered on site
- Software-managed to house, issue, and receive product





# Mobile App

## Customer Managed Inventory: Reduce Procurement Cost Through Ease of Ordering

Manage your inventory by using a barcode scanner or our Source Atlantic mobile app to order inventory. Reduce overall receiving, stocking, stock-out, carrying, and procurement costs!

- Custom product list and min/max quantities
- Elimination of administrative tasks – manually recording, transferring, emailing purchase orders
- Option to have Source Atlantic technician deliver inventory directly to storeroom shelf
- Monthly usage reports

Available in the App Store  
for both Android and iPhone



# Mobile App

## Customer Experience, The Shaw Group



***"The Source Atlantic App has provided us with an efficient and accurate ordering process that can be completed in less than five minutes."***

— Gerry Ashley, Purchasing at Shaw Group

**Problem:** Needed technology to reduce suppliers, improve inventory re-order accuracy while keeping the bulk of their inventory management with their storeroom attendant.

**Situation:** Tracking manually using spreadsheets and replenishing by visually identifying low or depleted stock – a lengthy and cumbersome process.

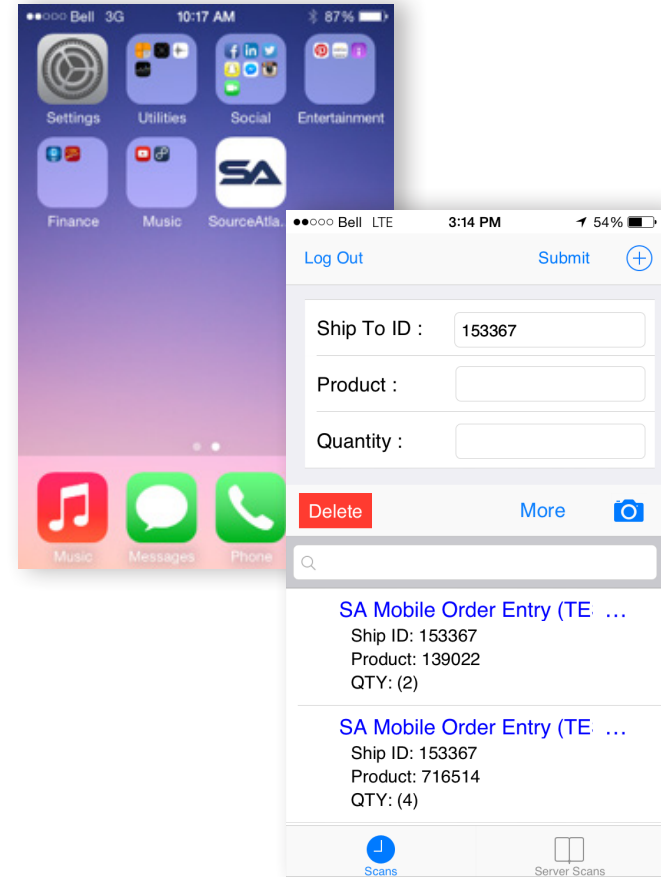
**Solution:** Source Atlantic introduced the mobile app – an order entry tool that eliminates the need to manually re-order inventory:

- Login under employee ID
- Scan barcode with camera
- Enter re-order quantity
- Confirm purchase order to Source Atlantic



### Result:

- Reduction in time spent manually recording, transferring and emailing purchase orders
- Reduction in time spent re-working manual entry error
- Reduced value of on hand inventory
- Optimized delivery time by using the app to auto-transmit orders to the nearest branch



# Point of Use Station

## Quick, Cost-Effective Storeroom Management Software

The POU is a computer station set up as an integrated inventory management system: this allows employees to receive and issue goods while tracking real-time stocking levels and transactions. When stock levels reach a minimum, re-ordering of product is automatically sent to Source Atlantic for replenishment!

- Ideal solution to manage tool inventory: eliminate issues related to tool control!
- Receive usage reports on consumables and checked-out/overdue reports on durables (automated reports can be sent to the supervisor at end-of-shift if tools are not returned to inventory)
- Software can append transactions to a specific project or work order number
- Set limits by crew or employee – or even limit which types of items certain crews or employees have access to.






# Procurement Card

## A Faster Alternative for Purchasing Goods and Services

The Source Card is a great control tool to understand project costs: multiple buyers making frequent transactions can apply a job reference number at point of purchase. Each month your company will receive a statement, showing by cardholder, their transactions and respective job reference numbers.

- No monthly or yearly fee
- Accepted at all Source Atlantic locations – use your card to purchase products and services from any of our many divisions
- Pre-approved transaction and credit levels – simply place your order!
- Each month, your company will receive a detailed transaction statement, showing the cardholder, their transaction (i.e. item, description, cost, quantity), and respective job reference numbers



 **SOURCE ATLANTIC**

Source Card Statement  
July 2019

**Billing: Example Co.**  
124 Any Street  
Anytown, CA E1E 1E1

**Card Balance: \$71.86**  
Card Issue: 2

Invoice	Invoice Date	Order Date	Qty	Description	Total Cost
278995	2019-07-02	2019-07-02	2	Blade, Saw - Reciprocating	39.89
278996	2019-07-05	2019-07-05	1	Hard Hat Suspension	17.58
278996	2019-07-05	2019-07-05	2	Burr, Carbide	14.39



# Reporting and Analytics

We work with you to determine what type of metrics you are looking to track and at what frequency the reporting makes sense. Reporting can be automatically sent to the appropriate supervisor or designated employee; examples of such reports include:

- Usage reports on consumables
- Checked-out reports on durables (POU only)
- Overdue reports on durables (POU only)

**Spend Analytics:** We can customize your reporting to show spend per user, per week, average hourly spend and also the number of users issuing the inventory; these can be by location, by spend recorded through software, spend billed by ERP, or for off-contract spend only.



# Reporting and Analytics

These reports can provide complete usage history by location, job, or crew, and can also include:

- Invoice Number
- Purchase Order Number
- Date
- Manufacturer Part Number
- Source Atlantic Part Number
- Manufacturer Name
- Product Category
- Product Description
- Branch ID
- Quantity Purchased

From this data, Source Atlantic can make recommendations to move forward with cost saving initiatives, service structure, and advancements in technology. These analytics can be compared and used to bring visibility to spend off-contract or outside of the solution implemented.



			Users Setup in CribMaster				Users Who Actually Pulled Product		
Start Date	End Date	Week	# of CribMaster Names	Weekly Spend: All Accounts	*Avg. Weekly Spend per User	**Avg. Hourly Spend per User	# of CribMaster Users Issued Inv.	Spend per User per Week	Avg. Hourly Spend per User (40 hrs/week)
3/28/2016	4/3/2016	Week 1	476	\$ 294,497.48	\$ 618.69	\$ 15.47	5	\$ 58,899.50	\$ 1,472.49
4/4/2016	4/10/2016	Week 2	476	\$ 95,658.07	\$ 200.96	\$ 5.02	205	\$ 466.62	\$ 11.67
4/11/2016	4/17/2016	Week 3	574	\$ 91,322.41	\$ 159.10	\$ 3.98	255	\$ 358.13	\$ 8.95
4/18/2016	4/24/2016	Week 4	574	\$ 71,720.41	\$ 124.95	\$ 3.12	321	\$ 223.43	\$ 5.59
4/25/2016	5/1/2016	Week 5	640	\$ 70,229.79	\$ 109.73	\$ 2.74	332	\$ 211.54	\$ 5.29
5/2/2016	5/8/2016	Week 6	679	\$ 53,729.16	\$ 79.13	\$ 1.98	403	\$ 133.32	\$ 3.33
5/9/2016	5/15/2016	Week 7	760	\$ 80,971.22	\$ 106.54	\$ 2.66	406	\$ 199.44	\$ 4.99
5/16/2016	5/22/2016	Week 8	831	\$ 87,475.19	\$ 105.26	\$ 2.63	293	\$ 298.55	\$ 7.46
5/23/2016	5/29/2016	Week 9	886				545		
5/30/2016	6/5/2016	Week 10	906				449		
6/6/2016	6/12/2016	Week 11	957				506		
6/13/2016	6/19/2016	Week 12	961				503		
6/20/2016	6/26/2016	Week 13	979				489		
<b>Average</b>				\$ 845,603.73		\$ 3.16		\$	6.75

# Warehouse Mapping and Design

Source Atlantic conducts a current-state assessment of business processes, dividing supply chain into seven segments – source, stock, store, issue, deliver, support, plan. During mapping, we review your physical assets (buildings, shelving, inventory) and systems (data, processes and policies, performance management). From this information, we compile a summary of various process management opportunities to pursue with the goal of:

- Reduction in MRO costs
- Reductions in number of suppliers
- Consolidation of SKU's
- Reduction in slow and obsolete inventory
- Increase in process efficiencies







Source Atlantic is truly a one-stop shop: our supply chain solutions can help to manage our multi-vertical products and services to keep your operations running smoothly.



# Supply Chain Management Solutions

Allowing you to focus on what your business does best.



*Contact your Source  
Atlantic account manager  
for more information*



[www.sourceatlantic.ca](http://www.sourceatlantic.ca)



[customersolutions@sourceatlantic.ca](mailto:customersolutions@sourceatlantic.ca)